

Compare with Recknagel & Paul, 1975 (Ed Weir) 240-1  
 Fir-Spruce-Hemlock Mtns. 7/13/70  
 With Ed Weir

Location	MAP ELEV	PRESSURE UP	PRESSURE DOWN	Intervp Elev UP Forward Trip	Intervp Elev DOWN Return Trip	Average Intervp ELEV.
A Winnissock Slide Trail Base	2600	28.27	28.29			
B <u>Ilex montana</u>		28.11		2730		
C Enter State land e-p1		28.01		2785		
D Ground veg like ridge growth, but no stunting		27.78		2995		
E Grave of Dead Fir		27.74		3025		
F Col E of Hemlock Mtn semi-lockset	3040	27.72				
G Hyla splendens - Pituonca Ilex area		27.68		3080		
H Enter Road			28.48		2430	
I Scot. Fir Hemlock, small			28.41		2495	
J Spring cart track			28.06		2805	
K Descend a series of ledges, fir out			27.84		3000	
L Summit Hemlock	3240	27.52	(---)			
M Fern glade off Hem. summit			27.57		Approx. elev. 3230	
N Hemlock-Spruce Col	3140	27.66	27.68			
O Sugar maple grove		27.54	27.56	3250	3250	3250
P Scot. fir under hwd re-enters		27.45		3350		
Q Spruce Summit	3380	27.40	27.42			
R Partial W. hwd to fir Mtn		27.66	27.65	3170	3170	3170
S Spruce-Fir Col	3100	27.75	27.73			
T Fern Glade		27.69	27.66	3150	3160	3155
U Uvularia sess. spring flat FNY FERN		27.50	27.50	3305	3305	3305
V Boggy with fir repro betw 2 ledges		27.42	27.42	3375	3375	3375
W Knoblet		27.34	27.34	3440	3445	3440
X NY Fern Station	3620	27.26		3510		
Z <u>Ilex montana</u>		27.39		3400		
UU Sugar maple grove		27.55		3270		
V Summit Fir Mtn	3620	27.13	27.14			

Fir Mtn  
3620

COL  
3100

Spruce Mtn  
3380

COL  
3140

Hemlock  
Mtn  
3240

COL  
3040

3200 3260

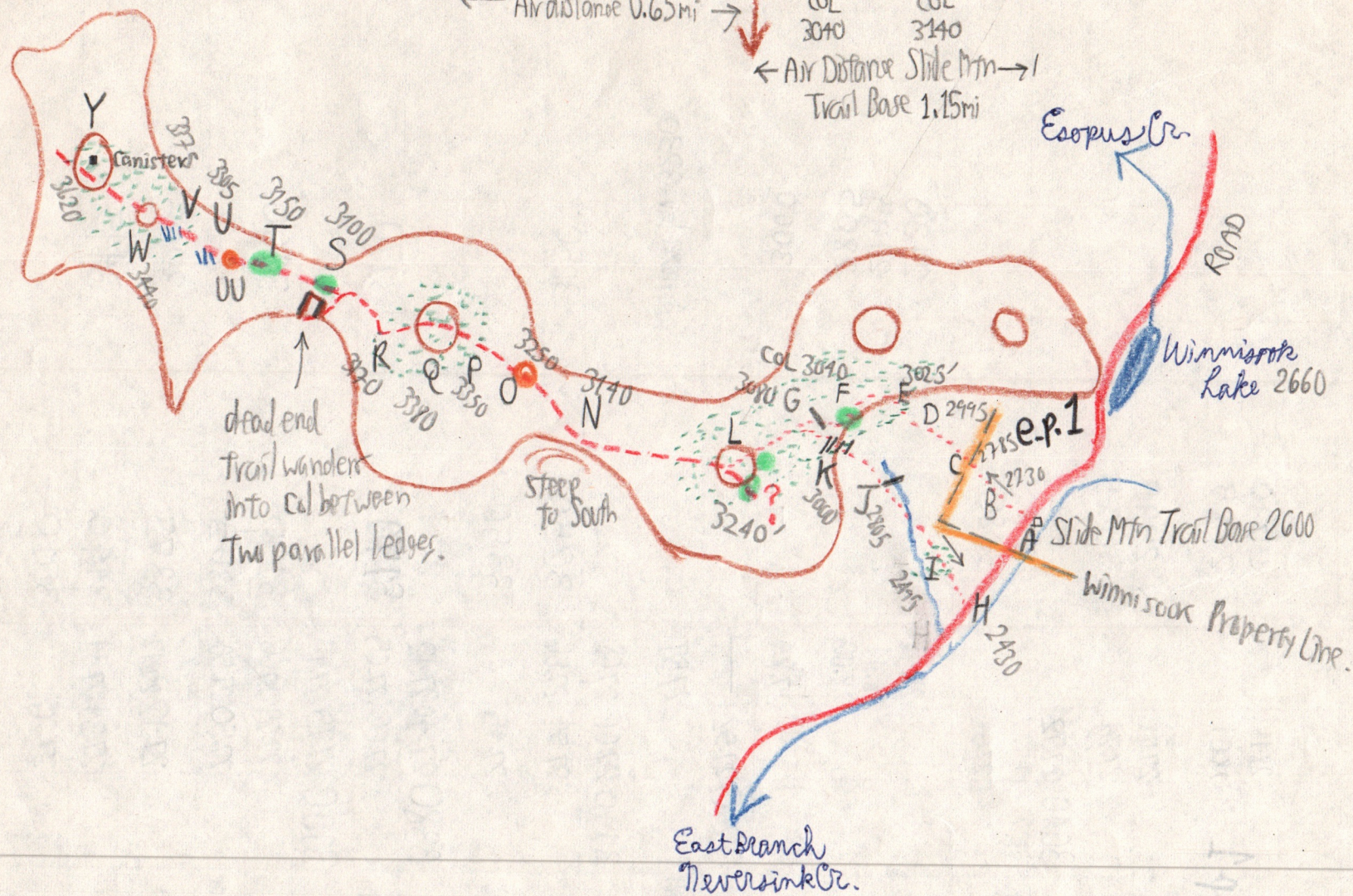
COL  
3140

← Air distance 1.2 mi →

← Air distance 0.65 mi →

← Air Distance Slide Mtn →  
Trail Base 1.15 mi

2402



● Hay-scented fern openings

● Scattered balsam

--- Blazed trail - red paint

--- Bushwhack Route

○ Sugar maple groves in hollow ridge growth

199

# Hemlock-Spruce-Fir Mtns.

2403

- B, Z, G Ilex montana seen at several stations: 2730 ft elev on SE slope Hemlock and 3400 ft. on SE slope Fir. May have seeded in by birds. Usually one to several (?) shrubs per station. Also on E slope of Hemlock at about 3100.
- C Cross line from Winnisnook to State Land at 2785 ft. Large 24" sugar maple
- D Ground vegetation already like that on ridge growth at 2995 ft, but trees not stunted. There is no hemlock on the SE slope of Hemlock nor any dead or decaying remains. No evidence of bark & logging roads on State Land, indicating a virgin condition. Winnisnook has logged their land several times and no large trees with fairly thick young trees still exist until State Land is reached. Bark peelers worked only within several hundred feet of the bark road in piling up the bark at the roadside. Forest here Beech-YB Black cherry-Red maple. 4" dead fir. Beech & YB to 24" & 200+ years.
- E Scattered fir become more common at 3025 ft. A grove of dead 2-6" firs here where stunting begins on the hardwoods. Sugar maple has entirely dropped out. Red maple & black cherry reproduction abounds.
- F Col between Hemlock & its east knob at 3040 ft. 1 live small hemlock & several fir live, dead, & dying. Ridge growth hardwoods. Semi-open area provides partial look to Slide's summit nearly hidden by west spur where Certis & Truck trails join at 3960 ft. Sorbus-pincherry & several large dead YB.
- G On <sup>1st</sup> ledge above W side of col at "F", red blaze paint on two trees was seen but no further trail indication. Could this link up with the blaze on top of Hemlock? Lycopodium obscurum & Coptis here. Dead & small fir under ridge growth. A short distance west are rocks with Pfaffia c.c. & Xyloconium. A few scattered Ilex montana perhaps at 3100 ft.

2904

- L. Hemlock Summit. See Transect #16, Elev. 3240.
- M. Fern glade (Nay centered) south of summit where blaze trail ends. Carex intv.
- N. Hemlock-Spruce col. Elev. 3140. NO fir, little stunting, ridge species. Sugar maples up to 12" in the col but not dominant.

- O. Sugar maple grove E slope Spruce Mtn at 3250 ft.
- P. Scattered fir re-enter 3" x 20' under hardwood. 3350 ft
- Q. Spruce Mtn Summit elev 3380. See Transect #15
- R. Partial W look out to Fir Mtn from W slope Spruce Mtn elev. 3170. 9" fir just below more Hylacomium
- S. Col between Spruce & Fir Mtns - 3100 ft. B-PB-MO-RM - scat dead 2-4" fir. No noticeable difference in vegetation between

UU. Sugar maple grove at 3270 ft near a 24" YB

here and summit of Fir Mtn. Some open glades in col. 10" fir 60-70% good <sup>raspberry</sup> <sup>Ptilium on one rock</sup>

Cinna common beginning to flower all along SE slope of Fir Mtn.

- T. Trail through open Nay centered glade with dead fir, dead YB. 3150 ft
- U. Springy flat dominated by Ulna sessilifolia. Elev. 3270. Some NY Fern
- V. Buggy <sup>flat</sup> area between two ledges. Hardwoods to 40 ft with a little fir reproduction (the only seen on entire trip) in the wettest spots. Fir dead, but dying as usual, but persisting longer here. RM-PB-B repr. in drier places under dead fir. One 6" x 20' hemlock. Carex brunneocens with Sphagnum in wettest spots. Raspberry in drier
- W. On upper ledge, trail gets on spur. Knoblet elev. 3440 above several ledgelets. Cornus canadensis in an opening. Dead YB's to 10" + and a little south of the trail a core of nearly <sup>pure</sup> balsam, many of them dead. Drainage in the core not especially poor.
- Y. Summit Fir Mtn 3620 ft. See Transect #14. Red blaze trail passes about 75 ft away from canister on SW.

Station for V. hartwegii seen on the trip.

# Fir-Spruce-Hemlock Mtns.

240-5

*Polygonum cilinode* & large YB's abundant throughout. The vine grows in partial shade as well as in the open.

- K. Descend a series of ledges. Fir out below 3000 ft.
- I. Intermittent brook ravine head waterfall with spring above. Luxuriant *Plagiothecium* covering the entire ledge 2805 ft.
- I. Scattered fir & small hemlock discontinuous grove. 2495 ft.
- H. Enter road on return trip at elev  $\frac{3430}{2}$ , ca.  $\frac{1}{3}$  to  $\frac{1}{2}$  mile below Slide Trail Base.

Fir Mtn, Spruce Mtn, Hemlock Mtn

240-6

Recknagel, 1915 Forest Survey  
Paul, 1915 " "

Ulster Co. History, 1880 (p311) 2 Peaks betw Big Indian & Slide have virgin  
hemlock, dense tanneries still in the Valley.